



NICK CHAMPION

PROPERTY | AUCTIONS | AGRICULTURE | PROFESSIONAL

8 ORCHARD COURT

TENBURY WELLS, WORCESTERSHIRE, WR15 8EZ

GUIDE PRICE
£130,000



A RETIREMENT BUNGALOW IN A PRIME POSITION ON A POPULAR DEVELOPMENT WHICH BENEFITS FROM A WARDEN SERVICE, RESIDENT FACILITIES AND AN ALARM SYSTEM CONVENIENTLY SITUATED WITHIN LEVEL WALKING DISTANCE OF THE TOWN CENTRE. EPC RATING C.

- KITCHEN • SPACIOUS LIVING ROOM
- SPACIOUS DOUBLE BEDROOM • SHOWER ROOM • EASY CARE GARDEN

NICK CHAMPION LTD

16 Teme Street, Tenbury Wells, Worcestershire, WR15 8BA

Tel: 01584 810555 | Email: info@nickchampion.co.uk

www.nickchampion.co.uk



8 ORCHARD COURT, TENBURY WELLS, WORCESTERSHIRE, WR15 8EZ

APPROXIMATE DISTANCES

Tenbury Wells – 0.4 mile, Leominster – 10 miles,
Bromyard – 10 miles, Ludlow – 10 miles,
Kidderminster – 19 miles, Worcester – 22 miles,
Hereford – 24 miles, M5 J6 – 24 miles.

DIRECTIONS

From Teme Street head south-west along the A4112 in the direction of Leominster. In Cross Street turn right onto Berrington Road and proceed past the Police Station, taking the second right hand turn into Orchard Court.

SITUATION

8 Orchard Court is pleasantly situated near the centre of the development overlooking the communal gardens in the purpose built and highly popular retirement only development. Orchard Court is within level walking distance of the town centre which offers many facilities including a range of shops and services, a library, doctors' surgery, cottage hospital, swimming pool, cinema and a range of clubs and societies.

DESCRIPTION

8 Orchard Court is an end-terraced bungalow constructed circa 1986 of brick elevations under a tiled roof. The property offers comfortable and secure accommodation and benefits from gas fired central heating with a Worcester boiler, a combination alarm system connected to the site warden's office and a front entrance secure coded key holder. 8 Orchard Court has been upgraded and benefits from replacement kitchen and shower room suites, and UPVC double glazing.

Orchard Court benefits from a permanent warden service, large communal gardens, a residents' laundry room and a popular residents' meeting lounge where a variety of regular functions are held. Orchard Court also offers visitor facilities including a guest bedroom and bathroom, and visitor parking.

ACCOMMODATION

A glazed door from the entrance porch leads into the spacious living room. The kitchen is located off the living room and has a range of white base and wall units incorporating a stainless steel sink and drainer, integral appliances including a SensorDry tumble dryer and Hygena dishwasher, plumbing for a washing machine, space for a fridge/freezer and a cooker with an extractor hood over, a Worcester Greenstar Ri boiler, and a larder cupboard. The inner hall has an airing cupboard with shelving and leads to the shower room which has a Mira Sport shower in a corner cubicle, a pedestal basin, wc, bidet and heated towel rail, and to a spacious double bedroom with a patio door to the garden, which could be partitioned to form a more compact double bedroom and a single bedroom/dining room/study.

OUTSIDE

The property is approached off the paved path which meanders around the communal gardens. To the front there are flower and shrub borders and a concealed bin store. To the rear of the property there is an easy care garden with a patio area and a maintained lawn.

TENURE

Leasehold – 60 years.
Minimum Age – 60 years.

SERVICES

Mains water, drainage, electricity and gas are connected.

LOCAL AUTHORITY

Malvern Hills District Council – Tel: 01684 862151
Council Tax Band B

SERVICE CHARGE

There is a service charge to cover warden service, residents' facilities, the alarm system, maintenance of the communal areas, lighting, painting exteriors, window cleaning and insurance – further details can be obtained from the Agents.

FIXTURES & FITTINGS

Only those mentioned in the particulars are included in the sale. All other items will be excluded.

ENERGY PERFORMANCE CERTIFICATE

EPC Rating C – Full details available upon request.

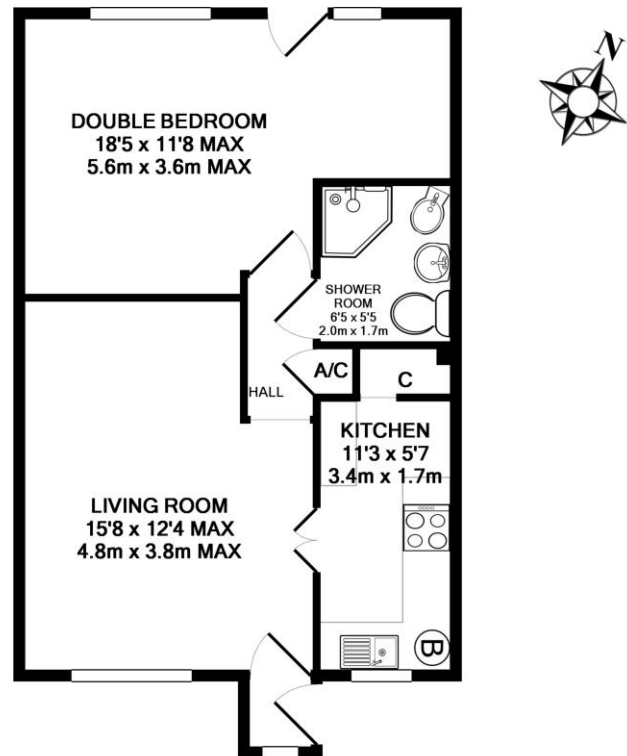
VIEWING

By prior appointment with the Agent: -
Nick Champion – Tel: 01584 810555
View all of our properties at:

www.nickchampion.co.uk

Photographs taken on 15th July 2019

Particulars prepared March 2019 and updated July 2019



Whilst every attempt has been made to ensure the accuracy of the floor plan contained here, measurements of doors, windows, rooms and any other items are approximate and no responsibility is taken for any error, omission, or mis-statement. This plan is for illustrative purposes only and should be used as such by any prospective purchaser. The services, systems and appliances shown have not been tested and no guarantee as to their operability or efficiency can be given
Made with Metropix ©2019

N218 Printed by Ravensworth 01670 713330

These particulars have been prepared in good faith to provide a general overview of the subject property and not a statement of fact. Any photograph(s) may portray only parts of the subject property at the time they were taken and may no longer be an accurate representation. Prospective purchasers should make their own enquiries as to the structural condition of the property and the nature and condition of any services, appliances, equipment or facilities that may be included in the sale. All areas, measurements, aspects and distances referred to within the particulars are merely provided as a guide and are approximate, and prospective purchasers must rely on their own enquiries.

These particulars are provided on the understanding that all negotiations are conducted through Nick Champion. Neither these particulars nor oral representations form part of any offer or contract and their accuracy cannot be guaranteed. Prospective purchasers are strongly advised to obtain verification of all matters pertaining to the sale of the subject property from their own solicitor or surveyor.